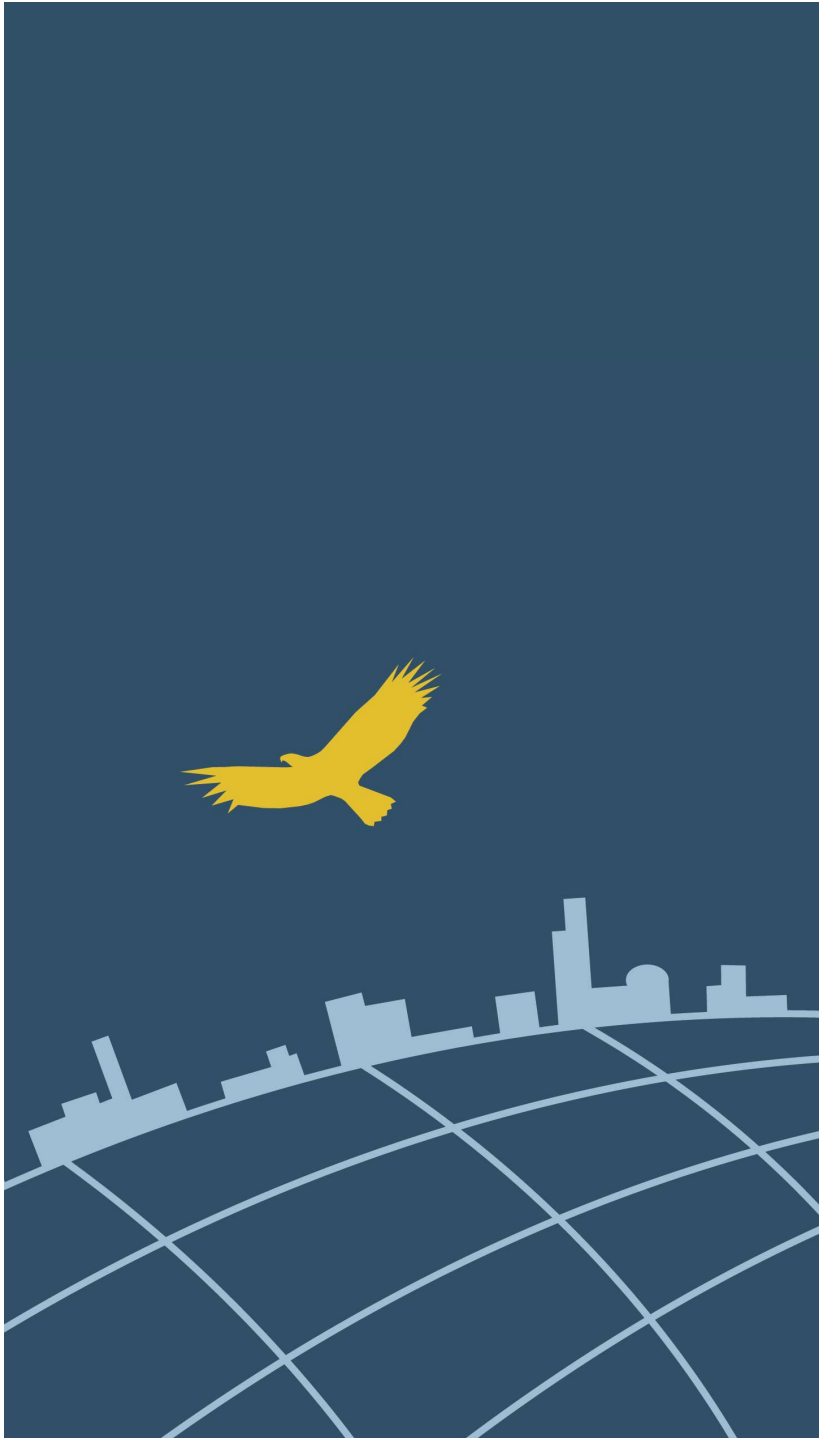


# Bay Area UASI

## 2017-2018 Care and Shelter Capability Building Project

*Corinne Bartshire  
Regional Project Manager*

*January 25, 2018*





# What is Bay Area UASI?

- Urban Areas Security Initiative
- Department of Homeland Security Funding Stream
- 14 Bay Area Jurisdictions
- Directed by Regional Approval Authority





# Who am I?

- Emergency Management Work Group Chair
- Regional Project Manager
  - Care and Shelter Capability Building
  - Bay Area Joint Information System Development
  - (upcoming) Critical Transportation Capability Building
- Yellow Command Exercise Director
- **Facilitator of Regional Collaboration**

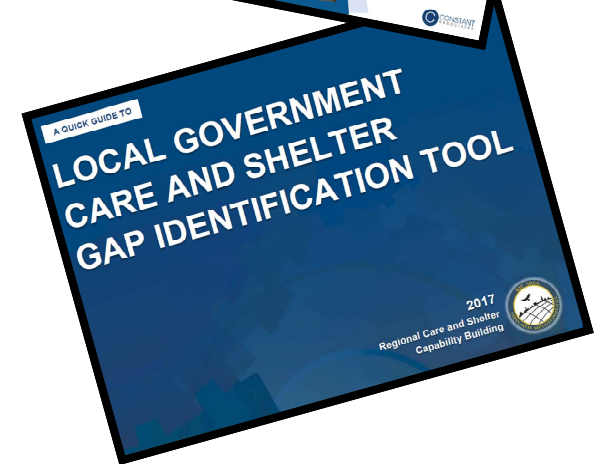
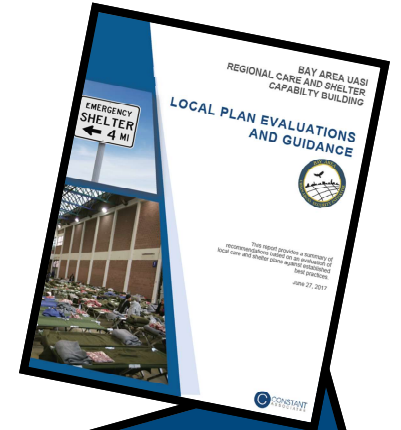




# 2017 Regional Capability Building

## Emergency Care and Shelter

- ✓ Local Plan Evaluations and Guidance
- ✓ Customizable Gap Identification Tool
- ✓ WebEOC Shelter Board
- ✓ MOU Status Dashboard
- ✓ Regional Strategy Report



<http://www.bayareauasi.org/careshelter>

Statewide Shelter Status BETA 5

Incident Independent

Filter by: Op Area: Main | Status: Show All | Shelter Type: Show All | ADA: Show All

To Area *	Name	Status	Type	ADA Compliant	APN	Pop. Density	Back-up Generator	Exec. Capacity	Shelter Capacity	Occupancy	Availability (based on sheltering)	Last Updated	Details
MARIN	PARK ELEMENTARY SCHOOL	Ready	ARC Managed	YES	NO	NO	150	75	0	75	04/13/2014	18:21:27	Map View Update
MARIN	MILL VALLEY MIDDLE SCHOOL	Open	ARC Managed				300	150	0	150	04/27/2014	11:15:44	Map View Update
MARIN	REED SCHOOL	Alert	ARC Managed				105	77	0	77	04/27/2014	11:15:59	Map View Update

Page 1 of 6 | © 2017 ESI Acquisition, Inc. All rights reserved. | intermedix



# 2017 Workshop Series

- **Roles and Responsibilities Workshop (5/1/2017)**
  - Role of State Agencies
  - Role of NGOs
  - Local Government Best Practices
  
- **Integrating Access and Functional Needs (8/23/2017)**
  - Best Practices from Southern California
  - Best Practices from Northern California
  
- **Charting the Path Forward (11/1/2017)**
  - Animal Care in Shelters
  - Addressing Medical Needs in Shelters
  - Regional Strategy



# 2017 Yellow Command Exercise Series

- 14 local TTXs conducted
- Focus on Mass Care Services including:
  - Local care and shelter plans
  - Bay Area Earthquake Plan (BAEP)
  - Roles and responsibilities
  - Capabilities to perform sheltering operations
- 1 Regional TTX
- **2018 Full Scale Exercise**





# 2017 Yellow Command Exercise Series

## Virtual Bay Area JIS Exercise

- September 6<sup>th</sup> 2017
- 4 Alameda County EOC JIS Staff
- Simulation Deck
- Slack
- Google Docs
- 2 Regional PIO Conference Calls
- Simulated 35 shelters and 35 C-PODs in Alameda County








# 2017 Yellow Command Exercise Series

## Regional Tabletop Exercise

September 7<sup>th</sup> 2017

- 130 participants
- Emergency Managers
- Care and Shelter Leaders
- NGOs: (American Red Cross, etc)
- State Agencies (Cal OES, CDSS, DGS, CDPH)
- Federal Agencies (FEMA, GSA, VA)



**Bay Area Urban Areas Security Initiative**  
2017 Yellow Command Regional Tabletop Exercise (TTX)

The Bay Area Urban Areas Security Initiative (BAUASI), in conjunction with the 2017 Urban Shield, invite you to participate in the 2017 Yellow Command Regional Tabletop Exercise.

**Thursday, September 7, 2017**

- Registration  
8:00 am – 9:00 am
- Exercise  
9:00 am – 3:00 pm

**OBJECTIVES**

- Discuss care and shelter response capabilities across local and state agencies as well as non-governmental and partner organizations.
- Identify gaps in care and shelter resources necessary for multi-jurisdictional and region-wide incidents.
- Identify processes for maintaining a regional common operating picture and situational awareness.
- Discuss coordinated use of regional information sharing tools such as WebEOC, CalEOC, and Cal COP.
- Discuss the integration/coordination of response operations with the Bay Area Joint Information System.

**Shannon Community Center**  
11600 Shannon Avenue  
Dublin, CA 94568

**TARGET AUDIENCE**

- UASI Jurisdictions
- NGOs
- State/Federal Agencies
- Other Care and Shelter Partners

**EMERGENCY SHELTER**  
← 4 MI

To register for this exercise:  
<https://www.eventbrite.com/e/2017-urban-shield-yellow-command-regional-tabletop-exercise-tickets-35520141700>  
For questions about this exercise, contact:  
Corinne Barshire - corinne.barshire@sigov.org | 415-353-5234





# 2017 Yellow Command Exercise Series

## Regional Tabletop Exercise Objectives

- Discuss *care and shelter response capabilities* across local and state agencies as well as non-governmental and partner organizations.
- Identify *gaps in care and shelter resources* necessary for multi-jurisdictional and region-wide incidents.
- Identify processes for maintaining a *regional common operating picture* and situational awareness.
- Discuss *coordinated use of regional information sharing tools* such as WebEOC, CalEOC, and Cal COP.
- Discuss the integration/coordination of response operations with the *Bay Area Joint Information System* and warning systems.



# 2017 Yellow Command Exercise Series





# 2017 Yellow Command Exercise Series





# 2017 Yellow Command Exercise Series

## Regional Tabletop Exercise Key Takeaways

- Local agency gap planning can inform state level planning → pre-scripted mission assignments
- Standardized situation report can help regional common operating picture
- Lack of communication from state to OAs on SA/COP
- Need to practice resource prioritization decision making and communication





# 2017 Alameda County Highlights

- Developing a Mass Care and Shelter Plan
- Updating shelter facility inventory data
- Developing shelter facility MOUs

## **Strengths:**

- FAST members
- Shelter training for county employees
- Addressing ADA regulations and requirements
- Cache of durable medical equipment

## **Areas for Improvement:**

- Better define agency roles and responsibilities
- Leverage learning system for employee training



# What is Next?

## Continue building partnerships!

- VOAD to network with AICo EMA?
- Establish Private Sector Advisory Committee?

<http://www.bayareauasi.org/PublicPrivatePartnership>

## Engage in UASI Regional Projects

- Care and Shelter Subcommittee
- Access and Functional Needs Planning Project
- Yellow Command Full Scale Exercise



# 2018 Yellow Command Exercise

## Exercise Participants

### 4 Full Scale Shelters (Volunteers, DSWs, CERTs)

- City of San Jose
- San Francisco
- City of Oakland?
- Sonoma County

### 14 UASI Jurisdictions (EOCs)

### Local Jurisdictions (cities, districts, DOCs)

### State and Federal Agencies

- State Operations Center?
- Regional Watch Center?

### NGO Partners



## FEMA Core Capabilities

Mass Care Services

Public Health, Healthcare,  
and Emergency Medical  
Services

Situational Assessment

Public Information and  
Warning

Logistics and Supply Chain  
Management





# Yellow Command Exercise Overview

## Planning Timeline

February 21, 2018	Regional Initial Planning Meeting
March 1, 2018	Regional Scenario Work Group Discussion (Virtual)
February 22 – March 30, 2018	UASI Jurisdiction MSEL Development
June 14, 2018	Regional Mid Planning Meeting
August 1, 2018	Regional Final Planning Meeting
September 6, 2018	YELLOW COMMAND EXERCISE
October 24, 2018	Regional After Action Meeting

\*Additional virtual meetings will be scheduled for Bay Area JIS exercise planning

\*\*MSELs will be custom developed for UASI jurisdictions. Templates will be shared with regional partners and concepts reviewed at Regional Planning Meetings.



# DRAFT Regional Objectives

- 1. Implement local plans to operate 4 shelter sites**
  - A. Supporting medical needs
  - B. Animal sheltering
  - C. DSWs as shelter workers
  - D. CERTs and other volunteers as shelter workers
- 2. Activate and operate local and Op Area EOCs**
- 3. Conduct regional information sharing and management processes**
- 4. Coordinate response efforts across governments and partners**
  - A. Resource requesting process
  - B. Exercise EMMA
- 5. Activate the Bay Area Joint Information System**
  - A. Support mutual aid systems
  - B. Coordinate across Bay Area JIS, local JICs, and Field PIOs
  - C. Coordinate community outreach across jurisdictions

# Questions?



**Bay Area UASI**





# Contact Information

**Corinne Bartshire**

Regional Project Manager

415-353-5234 (desk)

415-861-9005 (cell)

[Corinne.Bartshire@sfgov.org](mailto:Corinne.Bartshire@sfgov.org)